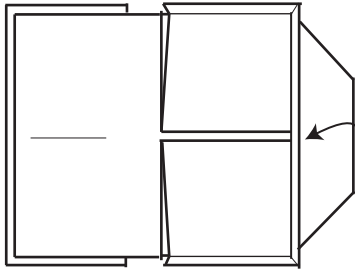


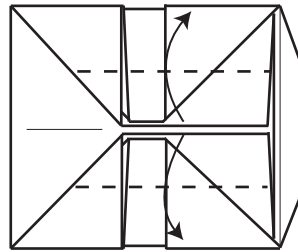
23



Fold up against the back seat. Turn over.

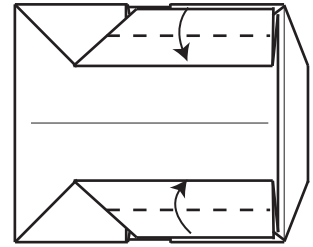


24



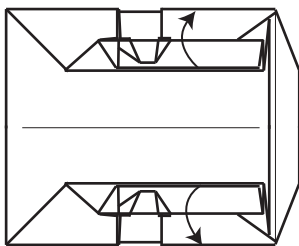
Valley Fold.

25



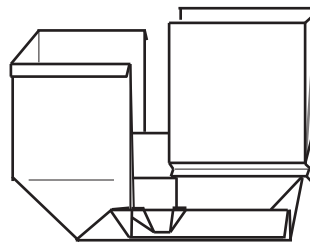
Valley fold.

26



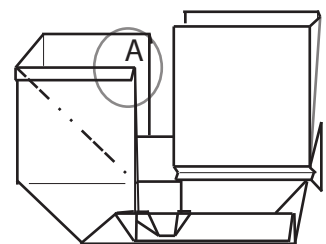
Lift the skids up 90 degrees.

27



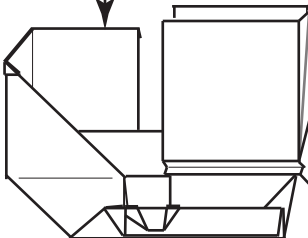
Side view after the skids are lifted in the previous step.

28



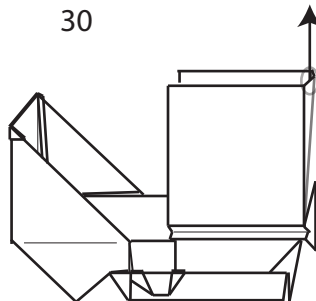
Mountain fold. Corner A will conveniently tuck between two layers, locking it.

29



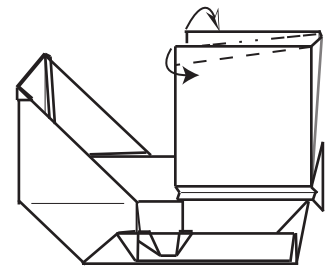
Repeat on the opposite side.

30



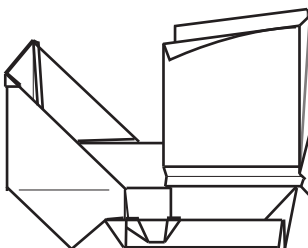
Lift the backseat edge up slightly.

31



Valley fold and curl if you can.

32



Complete.

Please note that a Sleigh has a lot of curves and rounded corners. I tried to show what I did to make the design so but I can't diagram it well.